

WHERE WILL YOU  
**TRAVEL2**

Valid for sale October – December 2011

**TRAVEL2**  
CRUISING

**2 FOR 1  
CRUISING!  
DISCOUNTED  
RATES!  
BONUS ONBOARD  
CREDIT!  
KIDS CRUISE  
FREE!**



EUROPE ■ ASIA ■ NORTH AMERICA ■ AUSTRALIA ■ SOUTH PACIFIC ■ ALASKA



**SAVE UP TO 325!^**

## Why choose Holland America Line?

- Gracious, award-winning service
- Exceptional value for money – onboard meals, activities, entertainment & gratuities included
- Spacious, elegant ships
- Extra time to explore the most popular ports

### 24 Day BALTIC, FJORDS & HIGHLANDS CRUISE



### 24 Day MAGIC OF THE MEDITERRANEAN CRUISE



### 21 Day MEDITERRANEAN ADVENTURE CRUISE



### 21 May 2012 Amsterdam-Copenhagen aboard ms EURODAM

SAILING	CRUISE PORTS
21 May 12	Amsterdam, The Netherlands
22 May 12	Cruising
23 May 12	Copenhagen, Denmark
24 May 12	Warnemunde (Berlin) Germany
25 May 12	Cruising
26 May 12	Tallinn, Estonia
27-28 May 12	St. Petersburg, Russia
29 May 12	Helsinki, Finland
30 May 12	Nynashamn, Sweden
31 May-1 Jun 12	Cruising
2 Jun 12	Amsterdam, The Netherlands
3 Jun 12	Cruising
4 Jun 12	Newcastle upon Tyne, England
5 Jun 12	S Queensferry (Edinburgh), UK
6 Jun 12	Invergordon, Scotland
7 Jun 12	Cruising
8 Jun 12	Alesund, Norway
9 Jun 12	Geiranger, Norway
9 Jun 12	Cruising Geirangerfjord
10 Jun 12	Flam, Norway
10 Jun 12	Scenic cruising Sognefjord
11 Jun 12	Bergen, Norway
12 Jun 12	Kristiansand, Norway
13 Jun 12	Oslo, Norway
13 Jun 12	Scenic cruising Oslo Fjord
14 Jun 12	Copenhagen, Denmark

### 24 May 2012 Barcelona-Venice aboard ms Nieuw AMSTERDAM

SAILING	CRUISE PORTS
24 May 12	Barcelona, Spain
25 May 12	Cruising
26 May 12	Livorno (Florence/Pisa), Italy
27 May 12	Civitavecchia (Rome), Italy
28 May 12	Naples, Italy
29 May 12	Cruising Strait of Messina
29 May 12	Messina, Italy
30 May 12	Cruising
31 May 12	Nafplion, Greece
1 Jun 12	Katakolon, Greece
2 Jun 12	Kerkira, Corfu, Greece
3 Jun 12	Dubrovnik, Croatia
4-6 Jun 12	Venice, Italy
7 Jun 12	Kotor, Montenegro
8 Jun 12	Cruising
9 Jun 12	Piraeus (Athens), Greece
10 Jun 12	Cruising The Dardanelles
10-11 Jun 12	Istanbul, Turkey
12 Jun 12	Mykonos, Greece
13 Jun 12	Kusadasi (Ephesus), Turkey
14 Jun 12	Thira (Santorini), Greece
15 Jun 12	Cruising
16 Jun 12	Split, Croatia
17 Jun 12	Venice, Italy

### 28 May 2012 round trip from Rome aboard ms NOORDAM

SAILING	CRUISE PORTS
28 May 12	Civitavecchia (Rome), Italy
29 May 12	Livorno (Florence/Pisa), Italy
30 May 12	Monte Carlo, Monaco
31 May-1 Jun 12	Barcelona, Spain
2 Jun 12	Palma de Mallorca, Spain
3 Jun 12	Cruising
4 Jun 12	La Goulette (Tunis), Tunisia
5 Jun 12	Trapani, Italy
6 Jun 12	Naples, Italy
7 Jun 12	Civitavecchia (Rome), Italy
8 Jun 12	Cruising
9 Jun 12	Dubrovnik, Croatia
10 Jun 12	Kerkira, Corfu, Greece
11 Jun 12	Katakolon, Greece
12 Jun 12	Thira (Santorini), Greece
13 Jun 12	Kusadasi (Ephesus), Turkey
14 Jun 12	Piraeus (Athens), Greece
15 Jun 12	Cruising
16 Jun 12	Messina, Italy
17 Jun 12	Civitavecchia (Rome), Italy

CABIN CATEGORY	PRICES PER PERSON FROM	SAVING^
Interior L	\$3,174*	<b>\$325</b>
Oceanview F	\$3,434*	<b>\$265</b>
Balcony VE	\$4,074*	<b>\$325</b>

CABIN CATEGORY	PRICES PER PERSON FROM	SAVING^
Interior L	\$2,844*	<b>\$155</b>
Oceanview F	\$3,384*	<b>\$115</b>
Balcony VD	\$3,844*	<b>\$155</b>

CABIN CATEGORY	PRICES PER PERSON FROM	SAVING^
Interior L	\$2,308*	<b>\$191</b>
Oceanview F	\$2,828*	<b>\$171</b>
Balcony VD	\$3,208*	<b>\$191</b>

Pre/Post Cruise ACCOMMODATION & SIGHTSEEING options available - ask us for details!

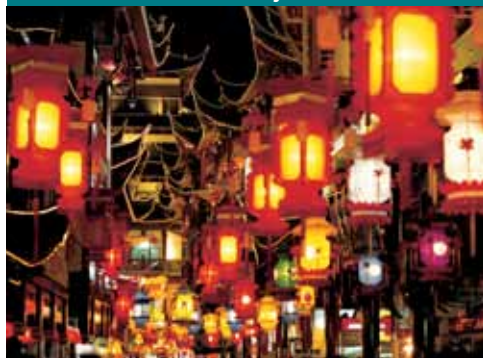
\*Holland America Line reserves the right to charge a fuel supplement for all guests at up to A\$13.05 per person per day should the price of light sweet crude oil according to the NYMEX (New York Mercantile Exchange Index) increase above \$70USD per barrel. ^Savings are already included in cruise fare. Saving amount based on brochured fares. Fares are per person, double occupancy and include taxes. Not combinable with any other fare or promotion. Offers are capacity controlled and may be modified or withdrawn or sailing/departure dates may be substituted without prior notice. Ship's Registry: The Netherlands. Refer to page 8 for full terms and conditions.



## Why choose P&O Cruises World Cruising?

- The best in British hospitality awaits you! Visit enchanting new shores whilst enjoying exceptional choice and service
- Fantastic dining by world-renowned chefs including Marco Pierre White and Atul Kochhar
- Incredible stage shows worthy of the West End
- Excellent value - onboard meals\*, entertainment & more included in your fare!

### AURORA SYDNEY-HONG KONG 22 February 2013



### AURORA SAN FRANCISCO-SYDNEY 30 January 2013



### AZURA SYDNEY-SINGAPORE 25 February 2013



#### 24-Night Asia Cruise Holiday

#### 24-Night Pacific Cruise Holiday

#### 26-Night Asia Cruise Holiday

SAILING	CRUISE PORTS
22 Feb 13	Sydney, Australia
23 Feb 13	Cruising
24 Feb 13	Brisbane, Australia
25 Feb 13	Cruising
26 Feb 13	Cairns, Yorkey's Knob
27-28 Feb 13	Cruising
1 Mar 13	Rabaul
2-6 Mar 13	Cruising
7 Mar 13	Osaka, Japan
8 Mar 13	Cruising
9 Mar 13	Nagasaki, Japan
10 Mar 13	Cruising
11 Mar 13	Beijing (Xingang), China
12 Mar 13	Cruising
13 Mar 13	Shanghai, China
14-15 Mar 13	Cruising
16 Mar 13	Hong Kong, China
17 Mar 13	Hong Kong, China

SAILING	CRUISE PORTS
30 Jan 13	San Francisco, California, USA
31 Jan-4 Feb 13	Cruising
5 Feb 13	Honolulu (Oahu), Hawaii, USA
6 Feb 13	Hilo, Hawaii, USA
7-10 Feb 13	Cruising
11 Feb 13	Bora Bora, French Polynesia
12 Feb 13	Papeete, Tahiti, French Polynesia
13-16 Feb 13	Cruising
17 Feb 13	Cross International Dateline
18 Feb 13	Auckland, New Zealand
19 Feb 13	Napier, New Zealand
20 Feb 13	Wellington, New Zealand
21-22 Feb 13	Cruising
23 Feb 13	Sydney, Australia
17 Jun 13	Venice, Italy

SAILING	CRUISE PORTS
25 Feb 13	Sydney, Australia
26 Feb 13	Cruising
27 Feb 13	Brisbane, Australia
28 Feb-1 Mar 13	Cruising
2 Mar 13	Cairns, Yorkey's Knob
3-7 Mar 13	Cruising
8 Mar 13	Kota Kinabalu
9-11 Mar 13	Cruising
12 Mar 13	Shanghai, China
13 Mar 13	Shanghai, China
14-15 Mar 13	Cruising
16 Mar 13	Hong Kong, China
17 Mar 13	Hong Kong, China
18 Mar 13	Cruising
19 Mar 13	Nha Trang, Vietnam
21 Mar 13	Ho Chi Min City (Phu My), Vietnam
22 Mar 13	Cruising
23 Mar 13	Singapore

Holiday Price includes 23-night cruise and 1-night post cruise hotel stay in Hong Kong

Holiday Price includes 23-night cruise and 1-night pre cruise hotel stay in San Francisco

Holiday Price includes 25-night cruise and 1-night post cruise hotel stay in Singapore

CABIN CATEGORY	HOTEL	PRICES PER PERSON FROM	ONBOARD CREDIT†
Inside OD4	Langham Place	\$3,987*	£60
Outside LC4	Mongkok, Vital Place	\$4,941*	£110
Balcony JA3	★★★★★	\$6,633*	£160

CABIN CATEGORY	HOTEL	PRICES PER PERSON FROM	ONBOARD CREDIT†
Inside OD4	Sheraton	\$3,775*	£50
Outside LC4	Fisherman's Wharf, Standard Room	\$4,702*	£100
Balcony JA3	★★★★★	\$6,295*	£140

CABIN CATEGORY	HOTEL	PRICES PER PERSON FROM	ONBOARD CREDIT†
Inside OG4	Swissotel	\$4,105*	£60
Outside LC4	Merchant Court, Classic Room	\$5,465*	£120
Balcony JF4	★★★★★	\$5,885*	£180

More Pre/Post Cruise ACCOMMODATION & SIGHTSEEING options available - ask us for details!

\*P&O Cruises may elect to impose a fuel supplement at any time, in which case any additional fees will apply to new bookings only. †Excludes specialty restaurants. ‡Onboard credit offer is limited and may be withdrawn at any time. Rates are based on per person twin share and are subject to change without notice. For full terms and conditions refer to <http://www.pocruises.com/legalbooking/> which passengers will be bound by. Refer to page 8 for more terms and conditions.



**SAVE UP TO \$1345!<sup>†</sup>**  
**BONUS ONBOARD CREDITS!<sup>^</sup>**

## Why choose Royal Caribbean International?

- Sumptuous food, spectacular entertainment, and outstanding service
- Extensive recreational facilities and kids' activity program
- Great value! Your fare includes onboard meals, entertainment and gratuities!

## RHAPSODY OF THE SEAS

**Sydney-Singapore 16 Feb 2012**  
**14 Night Nth Queensland & SE Asia Cruise**

SAILING	CRUISE PORTS	ARRIVE	DEPART
Day 1	Sydney, Australia	-	6:30pm
Day 2	Cruising	-	-
Day 3	Brisbane, Australia	7:00am	5:00pm
Day 4	Cruising	-	-
Day 5	Airlie Beach, Australia	7:00am	4:00pm
Day 6	Cairns, Australia	9:00am	6:00pm
Day 7-8	Cruising	-	-
Day 9	Darwin, Australia	10:00am	11:59pm
Day 10-11	Cruising	-	-
Day 12	Benoa Bali, Indonesia	7:00am	5:00pm
Day 13-14	Cruising	-	-
Day 15	Singapore	6:00am	-

CRUISE CATEGORY	PRICES FROM
Interior Q	\$1,386*
Large Oceanview I	\$1,566*
Junior Suite JS	\$2,736*

**South Pacific 12 Jan 2012**  
**10 Night round trip from Sydney**

SAILING	CRUISE PORTS	ARRIVE	DEPART
Day 1	Sydney, Australia	-	6:30pm
Day 2-3	Cruising	-	-
Day 4	Noumea, New Caledonia	7:00am	4:00pm
Day 5	Ouvea (Wadrilla) Loyalty Island	9:00am	6:00pm
Day 6	Vila, Vanuatu	8:00am	6:00pm
Day 7	Lifou, Loyalty Island	8:00am	6:00pm
Day 8	Isle of Pines, New Caledonia	7:00am	5:00pm
Day 9-10	Cruising	-	-
Day 11	Sydney, Australia	6:30am	-

CRUISE CATEGORY	PRICES FROM	SAVINGS
Interior Q	\$1,399*	\$735*
Large Oceanview I	\$1,799*	\$695*
Superior Balcony D1	\$2,733*	\$335*

**Sydney-Honolulu 13 April 2012**  
**16 Night South Pacific & Hawaii Cruise**

SAILING	CRUISE PORTS	ARRIVE	DEPART
Day 1	Sydney, Australia	-	6:30pm
Day 2-3	Cruising	-	-
Day 4	Noumea, New Caledonia	7:00am	6:00pm
Day 5	Isle of Pines, New Caledonia	8:00am	5:00pm
Day 6	Cruising	-	-
Day 7	Vila, Vanuatu	8:00am	5:00pm
Day 8	Cruising	-	-
Day 9	Suva, Fiji	8:00am	5:00pm
Day 9	International Dateline	-	-
Day 10	Pago Pago, American Samoa	8:00am	5:00pm
Day 11	Apia, Samoa	10:00am	8:00pm
Day 12-16	Cruising	-	-
Day 17	Honolulu, Hawaii	8:00am	-

CRUISE CATEGORY	PRICES FROM	SAVINGS
Interior Q	\$1,999*	\$1085*
Large Oceanview I	\$2,399*	\$1345*
Superior Balcony D2	\$4,099*	\$745*

## RADIANCE OF THE SEAS

**New Zealand 6 March 2012**  
**18 Nights Perth-Sydney via New Zealand**

SAILING	CRUISE PORTS	ARRIVE	DEPART
Day 1	Perth (Fremantle), Australia	-	6:30pm
Day 2	Albany, Australia	12:00pm	8:00pm
Day 3	Esperance, Australia	9:00am	7:00pm
Day 4-5	Cruising	-	-
Day 6	Adelaide, Australia	7:00am	6:00pm
Day 7	Cruising	-	-
Day 8	Melbourne, Australia	7:00am	7:00pm
Day 9	Cruising	-	-
Day 10	Hobart, Australia	8:00am	6:00pm
Day 11-12	Cruising	-	-
Day 13	Milford Sound, New Zealand	7:00am	8:00am
Day 13	Doubtful Sound, New Zealand	12:00pm	1:00pm
Day 13	Dusky Sound	2:30pm	4:00pm
Day 14	Dunedin, New Zealand	8:00am	6:00pm
Day 15	Akaroa, New Zealand	8:00am	7:00pm
Day 16	Wellington, New Zealand	7:00am	4:00pm
Day 17-18	Cruising	-	-
Day 19	Sydney	7:00am	-

CRUISE CATEGORY	PRICES FROM	SAVINGS
Interior Q	\$2,536*	\$685*
Large Oceanview I	\$3,246*	\$665*
Deluxe Balcony E3	\$4,586*	\$385*

**New Zealand 15 Jan 2012**  
**13 Night round trip from Sydney**

SAILING	CRUISE PORTS	ARRIVE	DEPART
Day 1	Sydney, Australia	-	5:00pm
Day 2-3	Cruising	-	-
Day 4	Milford Sound, New Zealand	7:00am	8:00am
Day 4	Doubtful Sound, New Zealand	12:00pm	1:00pm
Day 4	Dusky Sound, New Zealand	2:30pm	4:00pm
Day 5	Dunedin, New Zealand	8:00am	6:00pm
Day 6	Akaroa, New Zealand	7:00am	7:00pm
Day 7	Wellington, New Zealand	7:00am	5:00pm
Day 8	Napier, New Zealand	7:00am	1:00pm
Day 9	Tauranga, New Zealand	8:00am	6:00pm
Day 10	Auckland, New Zealand	8:00am	6:00pm
Day 11	Bay of Islands, New Zealand	8:00am	6:00pm
Day 12-13	Cruising	-	-
Day 14	Sydney	9:00am	-

CRUISE CATEGORY	PRICES FROM	ONBOARD CREDIT
Interior Q	\$1,699*	\$100 <sup>^</sup>
Large Oceanview H	\$1,899*	\$100 <sup>^</sup>
Deluxe Balcony E3	\$2,299*	\$150 <sup>^</sup>

**Tasmania 12 Feb 2012**  
**7 Night round trip from Sydney**

SAILING	CRUISE PORTS	ARRIVE	DEPART
Day 1	Sydney, Australia	-	5:00pm
Day 2	Cruising	-	-
Day 3	Melbourne, Australia	7:00am	-
Day 4	Melbourne, Australia	-	12:00pm
Day 5	Hobart, Australia	2:00pm	-
Day 6	Hobart, Australia	-	6:00pm
Day 7	Cruising	-	-
Day 8	Sydney, Australia	6:30am	-

CRUISE CATEGORY	PRICES FROM	SAVINGS
Interior Q	\$999*	\$415*
Large Oceanview I	\$1,199*	\$375*
Deluxe Balcony E3	\$1,399*	\$285*

\*Prices are based on double occupancy inclusive of all food, taxes and onboard gratuities. Prices and exact itineraries are subject to change at any time. Offer is valid until sold out and can be withdrawn at any time without notice. <sup>^</sup>Onboard credit subject to availability and only applicable for the 15 January 2012 sailing. <sup>†</sup>Savings are already included in cruise fare. Savings are off brochure fares. Inside and Outside cabins receive \$100. Balcony cabins receive \$150. Onboard credit has no cash value and is non-transferable. For full terms and conditions refer to the Royal Caribbean International Worldwide Cruise 2010-2012 brochure. Refer to page 8 for more terms and conditions.



## Why choose Norwegian Cruise Line?

- Freestyle Cruising – Freedom to create your own cruise experience
- Most modern ship fleet afloat
- World-famous acts including the Blue Man Group
- Onboard meals, entertainment & gratuities included

### NCL'S HAWAII with PRIDE OF AMERICA



#### 7 NIGHT HAWAIIAN ISLANDS FROM HONOLULU

SAILING	PORTS	ARRIVE	DEPART	SAILING DATES
Day 1	Honolulu, Hawaii	-	7:00pm	
Day 2	Maui, Hawaii	8:00am	-	1, 8, 15, 22, 29 <b>Oct 11</b>
Day 3	Maui, Hawaii	-	6:00pm	5, 12, 19, 26 <b>Nov 11</b>
Day 4	The Big Island, Hawaii	8:00am	6:00pm	3, 10, 17, 24, 31 <b>Dec 11</b>
Day 5	The Big Island, Hawaii	7:00am	6:00pm	7, 14, 21, 28 <b>Jan 12</b>
Day 6	Kauai, Hawaii	8:00am	-	4, 11, 18, 25 <b>Feb 12</b>
Day 7	Kauai, Hawaii	-	2:00pm	
Day 8	Honolulu, Hawaii	7:00am	-	

CRUISE CATEGORY	PRICES PER PERSON FROM
Inside	\$929*
Oceanview	\$1,029*
Balcony	\$1,379*

\*Prices based on 19Nov11 sailing.

### NCL'S EUROPE with NORWEGIAN EPIC



**BONUS ONBOARD CREDITS!†**

#### 7 NIGHT WESTERN MEDITERRANEAN FROM BARCELONA

SAILING	PORTS	ARRIVE	DEPART	SAILING DATES
Day 1	Barcelona, Spain	-	6:00pm	
Day 2	Cruising	-	-	3, 13, 20, 27 <b>May 12</b>
Day 3	Naples, Italy	7:00am	7:00pm	3, 10, 17, 24 <b>Jun 12</b>
Day 4	Rome (Civitavecchia), Italy	7:00am	7:00pm	1, 8, 15, 22, 29 <b>Jul 12</b>
Day 5	Florence/Pisa (Livorno), Italy	7:00am	7:00pm	5, 12, 19, 26 <b>Aug 12</b>
Day 6	Nice (Villefranche), France	8:00am	7:00pm	2, 9, 16, 30 <b>Sep 12</b>
Day 7	Marseille, France	7:00am	4:00pm	7, 14 <b>Oct 12</b>
Day 8	Barcelona, Spain	5:00am	-	

CRUISE CATEGORY	PRICES PER PERSON FROM	ONBOARD CREDIT
Inside	\$759*	<b>USDS\$200</b>
Balcony	\$959*	<b>USDS\$250</b>
Mini Suite	\$1,029*	<b>USDS\$300</b>

\*Prices based on 30Sep12 sailing.

### NCL'S EUROPE WITH NORWEGIAN JADE



**BONUS ONBOARD CREDITS!†**

#### 10 NIGHT EASTERN MEDITERRANEAN FROM ROME

SAILING	PORTS	ARRIVE	DEPART	SAILING DATES
Day 1	Rome (Civitavecchia), Italy	-	5:00pm	
Day 2	Cruising	-	-	
Day 3	Olympia (Katakolon), Greece	8:00am	5:00pm	
Day 4	Athens (Piraeus), Greece	8:00am	5:00pm	26 <b>Oct 11</b>
Day 5	Ephesus (Izmir), Turkey	8:00am	6:00pm	16 <b>Nov 11</b>
Day 6	Cruising	-	-	
Day 7	Alexandria, Egypt	6:00am	-	
Day 8	Alexandria, Egypt	-	6:00pm	
Day 9-10	Cruising	-	-	
Day 11	Rome (Civitavecchia), Italy	5:00am	-	

CRUISE CATEGORY	PRICES PER PERSON FROM	ONBOARD CREDIT
Inside	\$803*	<b>USDS\$150</b>
Oceanview	\$853*	<b>USDS\$200</b>
Balcony	\$1153*	<b>USDS\$250</b>

\*Prices based on 26Oct11 sailing.

### NCL'S ALASKA WITH NORWEGIAN PEARL



#### 7 NIGHT GLACIER BAY ALASKA FROM SEATTLE

SAILING	PORTS	ARRIVE	DEPART	SAILING DATES
Day 1	Seattle, USA	-	4:00pm	
Day 2	Cruising Inside Passage	-	-	
Day 3	Juneau, Alaska	2:00pm	10:00pm	13, 20, 27 <b>May 12</b>
Day 4	Skagway, Alaska	7:00am	8:15pm	3, 10, 17, 24 <b>Jun 12</b>
Day 5	Cruising Glacier Bay	-	-	1, 8, 15, 22, 29 <b>Jul 12</b>
Day 6	Ketchikan, Alaska	6:00am	1:30pm	5, 12, 19, 26 <b>Aug 12</b>
Day 7	Victoria, Canada	6:00am	11:59pm	2, 9 <b>Sep 12</b>
Day 8	Seattle	8:00am	-	

CRUISE CATEGORY	PRICES PER PERSON FROM
Inside	\$749*
Oceanview	\$889*
Balcony	\$1499*

\*Prices based on 13May12 sailing.

\*Prices are per person based on twin share cabin accommodation, including port charges, taxes, onboard meals, entertainment and gratuities. Airfares are not included. †Onboard credit is valid for bookings made before 31 October 2011 for all 2012-2013 6+ day Europe Sailings. Onboard credit is per stateroom, in US Dollars and will be applied to the 1st and 2nd guest on the reservation. Onboard credit has no monetary value, is non-transferable and is subject to availability. It may not be used toward onboard service charges. Refer to page 8 for full terms and conditions.



## Why choose Carnival Cruise Line?

Award-winning service, delicious dining, onboard activities, nightly entertainment and spacious accommodation. With so many departure ports and itinerary options, all you need to do is get to the dock and your holiday starts right away.

### 12 Night GRAND MEDITERRANEAN

SAVE UP TO 60%



#### 15 JUNE 2012 BARCELONA ROUND TRIP ABOARD CARNIVAL BREEZE

SAILING	PORTS	ARRIVE	DEPART
Day 1	Barcelona, Spain	-	5:00pm
Day 2	Marseille, France	7:00am	4:00pm
Day 3	Livorno (Florence/Pisa), Italy	7:00am	4:00pm
Day 4	Civitavecchia (Rome), Italy	7:00am	9:00pm
Day 5	Naples, Italy	7:00am	7:00pm
Day 6	Cruising	-	-
Day 7	Dubrovnik, Croatia	7:00am	4:00pm
Day 8	Venice, Italy	10:00am	11:00pm
Day 9	Cruising	-	-
Day 10	Messina, Sicily, Italy	10:00am	7:00pm
Day 11	Cruising	-	-
Day 12	Palma De Mallorca, Spain	8:00am	6:00pm
Day 13	Barcelona, Spain	5:00am	-

CRUISE CATEGORY	PRICES PER PERSON FROM	SAVINGS
Interior 4B	\$1,476*	60%
Balcony 8B	\$2,249*	50%

### 12 Night GRAND MEDITERRANEAN

SAVE UP TO 60%



#### 26 AUGUST 2012 VENICE TO BARCELONA ABOARD CARNIVAL BREEZE

SAILING	PORTS	ARRIVE	DEPART
Day 1	Venice, Italy	-	-
Day 2	Venice, Italy	-	6:00pm
Day 3	Cruising	-	-
Day 4	Dubrovnik, Croatia	7:00am	7:00pm
Day 5	Cruising	-	-
Day 6	Messina, Sicily, Italy	7:00am	4:00pm
Day 7	Naples, Italy	7:00am	-
Day 8	Naples, Italy	-	7:00pm
Day 9	Civitavecchia (Rome), Italy	7:00am	9:00pm
Day 10	Livorno (Florence/Pisa), Italy	7:00am	7:00pm
Day 11-12	Cruising	-	-
Day 13	Barcelona, Spain	5:00am	-

CRUISE CATEGORY	PRICES PER PERSON FROM	SAVINGS
Interior 4B	\$1,617*	55%
Balcony 8B	\$2,391*	45%

### 15 Night TRANSATLANTIC - 6 NOVEMBER 2012

CRUISE FOR ONLY \$75 PER DAY!



#### BARCELONA TO MIAMI ABOARD CARNIVAL BREEZE

SAILING	PORTS	ARRIVE	DEPART
Day 1	Barcelona, Spain	-	5:00pm
Day 2	Palma De Mallorca, Spain	8:00am	6:00pm
Day 3	Cruising	-	-
Day 4	Malaga, Spain	8:00am	5:00pm
Day 5	Cruising	-	-
Day 6	Las Palmas, Gran Canaria, Canary Islands	8:00am	4:00pm
Day 7-11	Cruising	-	-
Day 12	Antigua, Antigua & Barbuda	9:00am	5:00pm
Day 13	St Maarten, Netherlands Antilles	7:00am	5:00pm
Day 14-15	Cruising	-	-
Day 16	Miami, Florida	8:00am	-

CRUISE CATEGORY	PRICES PER PERSON FROM
Interior 4B	\$1,124*
Balcony 8B	\$1,743*

### 7 Nights EXOTIC WESTERN CARIBBEAN - 21 APRIL 2012

CRUISE FOR ONLY \$88 PER DAY!



#### MIAMI ROUND TRIP ABOARD CARNIVAL LIBERTY BREEZE

SAILING	PORTS	ARRIVE	DEPART
Day 1	Miami, Florida	-	4:00pm
Day 2	Cruising	-	-
Day 3	Cozumel, Mexico	7:00am	5:00pm
Day 4	Belize City, Belize	8:00am	5:00pm
Day 5	Roatan, Honduras	7:00am	3:00pm
Day 6	Georgetown (Grand Canyon) Cayman Islands	10:00am	6:00pm
Day 7	Cruising	-	-
Day 8	Miami, Florida	8:00am	-

CRUISE CATEGORY	PRICES PER PERSON FROM
Interior 4B	\$613*
Oceanview 6B	\$716*
Balcony 8B	\$850*

\*Advertised fares are valid until sold out. All prices are correct as of 21 September 2011 and are subject to availability, currency fluctuations and surcharges until final payment is received. Carnival Cruise Lines reserves the right to re-instate the fuel supplement for all guests at up to US\$9 per person per day if the NYMEX oil price exceeds \$70 per barrel. Cruise itineraries are subject to change without notice. Carnival Cruise Lines reserves the right to modify or withdraw prices at any time without prior notice. Other conditions apply. Ship Registry: Panama. Refer to page 8 for full terms and conditions.



## Why choose MSC Cruises?

- Offering over 100 itineraries and 12 ships
- All year round cruising in the Mediterranean
- Flexible embarkation ports allow you to enjoy your cruise no matter where you are
- Combine 2 cruises and receive an additional \$100 per person off the second cruise#

### 7 NIGHT MAGNIFICENT MEDITERRANEAN



### 7 NIGHT STUNNING NORWEGIAN FJORDS



### VENICE ROUND TRIP ABOARD MSC ARMONIA

SAILING	PORTS	ARRIVE	DEPART	SAILING DATES
Day 1	Venice, Italy	-	7:00pm	Every Friday from 11 May to 26 October 2012
Day 2	Ancona, Italy	7:00am	1:30pm	
Day 3	Corfu, Greece	12:30pm	5:30pm	
Day 4	Santorini, Greece	3:30pm	10:00pm	
Day 5	Piraeus/Athens, Greece	7:30am	2:30pm	
Day 6	Argostoli/Cefalonia, Greece	9:00am	2:00pm	
Day 7	Kotor, Montenegro	7:00am	1:00pm	
Day 8	Venice, Italy	10:00am	-	

CRUISE CATEGORY	PRICES PER PERSON FROM
Inside Category 1	\$659*

Based on 5, 12, 19 and 26 October 2012 sailing.

### COPENHAGEN ROUND TRIP ABOARD MSC POESIA

SAILING	PORTS	ARRIVE	DEPART	SAILING DATES
Day 1	Copenhagen, Denmark	-	6:00pm	20 May, 3, 17 June, 1, 15, 29 July, 26 August 2012
Day 2	Oslo, Norway	9:30am	3:00pm	
Day 3	Stavanger/Lysefjord, Norway	9:00am	6:00pm	
Day 4	Bergen, Norway	8:00am	6:00pm	
Day 5	Hellesylt & Geiranger, Norway	8:00am	5:00pm	
Day 6	Cruising	-	-	
Day 7	Kiel, Germany	10:00am	6:00pm	
Day 8	Copenhagen, Denmark	8:00am	-	

CRUISE CATEGORY	PRICES PER PERSON FROM
Inside Category 1	\$1159*

Based on 20 May 2012 sailing.

### 9 NIGHT EXPLORE ITALY TO GERMANY



### 11 NIGHT BALTICS AND RUSSIA



### 26 APRIL 2012 GENOA TO KIEL ABOARD MSC POESIA

SAILING	PORTS	ARRIVE	DEPART
Day 1	Genoa, Italy	-	6:00pm
Day 2	Cruising	-	-
Day 3	Malaga, Spain	1:00pm	9:00pm
Day 4	Cadiz, Spain	8:00am	5:00pm
Day 5	Lisbon, Portugal	8:00am	4:00pm
Day 6	Vigo, Spain	8:00am	2:00pm
Day 7	Cruising	-	-
Day 8	Dover, UK	8:00am	4:00pm
Day 9	Cruising	-	-
Day 10	Kiel, Germany	10:00am	-

CRUISE CATEGORY	PRICES PER PERSON FROM
Inside Category 1	\$1099*

Based on 26 April 2012 sailing.

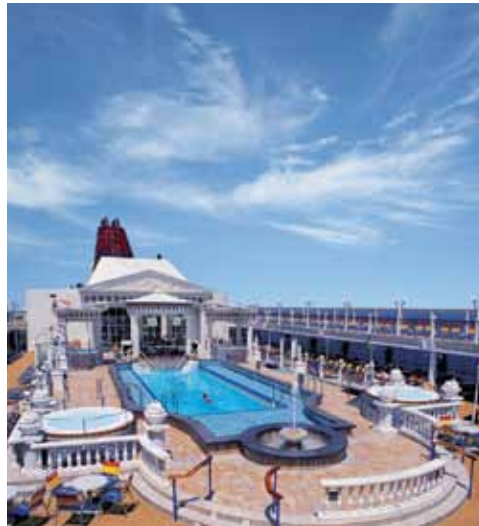
### 11 MAY 2012 HAMBURG ROUND TRIP ABOARD MSC LIRICA

SAILING	PORTS	ARRIVE	DEPART
Day 1	Hamburg, Germany	-	9:00pm
Day 2-3	Cruising	-	-
Day 4	Stockholm, Sweden	10:00am	4:00pm
Day 5	Tallin, Estonia	10:00am	4:00pm
Day 6	St Petersburg, Russia	7:30am	-
Day 7	St Petersburg, Russia	-	7:00pm
Day 8	Cruising	-	-
Day 9	Copenhagen, Denmark	10:30am	6:30pm
Day 10	Cruising	-	-
Day 11	Amsterdam, The Netherlands	8:00am	3:00pm
Day 12	Hamburg, Germany	1:00pm	-

CRUISE CATEGORY	PRICES PER PERSON FROM
Inside Category 1	\$1489**

Based on 11 May 2012 sailing

\*Prices are per person twin share based on inside cabin category 1 subject to availability at time of booking. Surcharges apply to other categories and other departure dates other than stated. Not combineable with other offers or promotions. † MSC Lirica departing 11 May 2012 to Northern Europe has an overnight stay in Russia and certain visa requirements are to be met, please check details at time of booking. #Combine two cruises and save an additional \$100 per person off second cruise is based on both cruises being booked at the same time and within 4 weeks of each other. ^Children under 18 cruise free when sharing one cabin with two paying adults however port charges from \$175 up to \$300 per child apply. Flexible embarkation is only valid on return cruises and not available at every port of call in Europe. Refer to MSC Cruises 2011-2012 brochure. Refer to page 8 for full terms and conditions.



## Why choose Star Cruises?

- Freestyle Cruising
- Strictly no tipping policy
- Leading Cruise Line in Asia Pacific
- Caters to all ages

## SuperStar Libra 2 for 1 Cruising!

### 7 Night CRUISE & STAY Phuket - Krabi - Penang - Phuket

SAILING	PORTS	ARRIVE	DEPART	SAILING DATES
Day 1	Phuket Island, Thailand	-	10:00pm	
Day 2	Krabi, Thailand	9:00am	7:00pm	
Day 3	Penang, Malaysia	10:00am	7:00pm	
Day 3-7	4 nights hotel accommodation in Penang	-	-	17, 24, 31 <b>Oct 11</b> 7, 14, 21, 28 <b>Nov 11</b> 5, 12 <b>Dec 11</b>
Day 7	Penang reboard ship	-	5:00pm	
Day 8	Phuket Island, Thailand	9:00am	-	

CRUISE CATEGORY	HOTEL	FROM	SAVINGS
Inside Stateroom	4 Nights stay at Paradise Sandy Beach Resort Superior Studio ★★★★	\$573*	<b>SAVE 50%!†</b>
Oceanview with Porthole		\$625*	
Deluxe Oceanview		\$667*	

### 5 Night CRUISE & STAY Penang - Phuket - Krabi - Penang

SAILING	PORTS	ARRIVE	DEPART	SAILING DATES
Day 1	Penang, Malaysia	-	5:00pm	
Day 2	Phuket, Thailand	7:00am	5:00pm	2, 9, 16, 23, 30 <b>Oct 11</b>
Day 3	Krabi, Thailand	7:00am	5:00pm	6, 13, 20, 27 <b>Nov 11</b>
Day 4	Penang, Malaysia	10:00am	-	4, 11, 18 <b>Dec 11</b>

CRUISE CATEGORY	HOTEL	FROM	SAVINGS
Inside Stateroom	1 Night pre/1 Night post cruise stay at Paradise Sandy Beach Resort Superior Studio ★★★★	\$550*	<b>SAVE 50%!†</b>
Oceanview with Porthole		\$621*	
Deluxe Oceanview		\$662*	

## SuperStar Virgo End of Season Sale!

### 7 Night CRUISE & STAY Singapore - Penang - Phuket - Port Klang

SAILING	PORTS	ARRIVE	DEPART	SAILING DATES
Day 1	Singapore	-	4:00pm	
Day 2	Penang, Malaysia	12:00pm	7:00pm	
Day 3	Phuket, Thailand	7:30am	4:00pm	6, 13, 20, 27 <b>Nov 11</b>
Day 4	Singapore	7:00pm	11:59pm	4, 11, 18 <b>Dec 11</b>
Day 5	Malacca, Malaysia	7:00am	9:00pm	
Day 5	Port Klang, Malaysia	2:00pm	9:00pm	
Day 6	Singapore	1:00pm	-	

CRUISE CATEGORY	HOTEL	FROM	SAVINGS
Inside Stateroom	1 Night pre/1 Night post cruise stay at Ibis Singapore Standard Room ★★★	\$1074*	<b>SAVE 40%!†</b>
Oceanview with Porthole		\$1199*	
Deluxe Oceanview		\$1449*	

### 5 Night CRUISE & STAY Singapore - Penang - Phuket - Singapore

SAILING	PORTS	ARRIVE	DEPART	SAILING DATES
Day 1	Singapore	-	4:00pm	
Day 2	Penang, Malaysia	12:00pm	7:00pm	6, 13, 20, 27 <b>Nov 11</b>
Day 3	Phuket, Thailand	7:30am	4:00pm	4, 11, 18, 25 <b>Dec 11</b>
Day 4	Singapore	7:00pm	11:59pm	

CRUISE CATEGORY	HOTEL	FROM	SAVINGS
Inside Stateroom	1 Night pre/1 Night post cruise stay at Ibis Singapore Standard Room ★★★	\$722*	<b>SAVE 40%!†</b>
Oceanview with Porthole		\$800*	
Deluxe Oceanview		\$947*	

\*2 for 1 cruising and reduced rates for the End of Season Sale are valid for booking and travel October – December 2011 only. †Savings are already included in cruise fare. Savings are off brochured fares. Offer is applicable for DC-ADB cabin categories only and is only applicable for new FIT bookings. Cannot be used in conjunction with any other promotional offer. Offer is exclusive of Passenger Handling Charges, Fuel Surcharge, holiday surcharge (where applicable), visa charges (where applicable), shore fee and any other incidental charges. For full terms and conditions see bottom of the page.

Your local TRAVEL 2 agent is:

\*Travel Agent service fees & credit card fees may apply & vary by agency, please check at time of enquiry. Cruise package prices are per person twin share in Australian dollars. Prices include port handling charges and taxes except for where stated otherwise. Valid for sale until sold out for travel as specified. Prices and information correct as at 21 September 2011 and subject to availability and change at time of booking should tariff, taxes, fuel surcharge &/ or currencies fluctuate. Prices based on lead in cabin categories that are available at time of issue, unless otherwise stated. Supplements apply for other cabin categories. Airfares are additional. Prices and availability are subject to change by Cruise Line inventory control. Cruise itineraries can change at the discretion of the cruise line. Cruise lines reserve the right to modify or withdrawn prices at any time without notice. Prices are not guaranteed until final payment is made. Savings are per person and are included in price. Deposit conditions apply. Passport details are required at time of booking. Seasonal surcharges, booking amendments and cancellation fees apply. Prices do not include taxes or charges collected directly by third parties. ABN 84 003 237 296. Lic 30204.